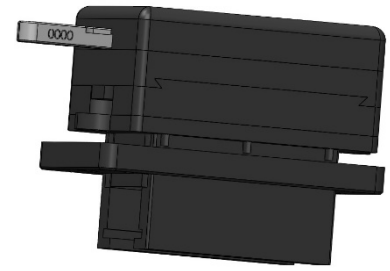


Mounting Instruction

OBD-Saver

intended for the following vehicle

Mazda MX5



Description :

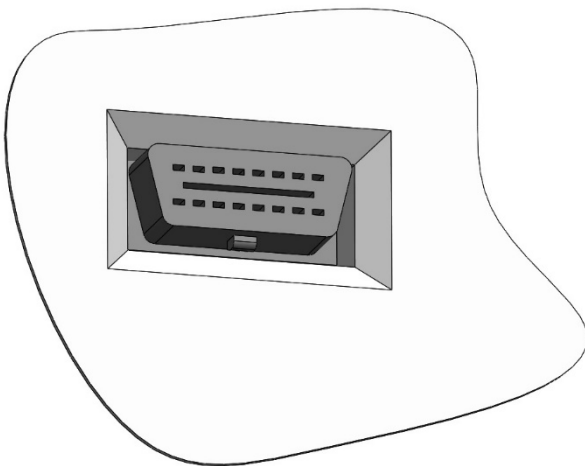
The OBD Saver disables effectively every access to ECUs via OBD – Interface (e.g. electronic immobilizer). The OBD – interface is locked with the OBD Saver. Thus connecting any device to the OBD interface is impossible and the connection to the car therefore denied.

When locked by the OBD Saver your car is protected very effectively. The control unit which controls the ignition of your car cannot be deactivated via OBD. From this time on your car will only start with the original ignition keys!

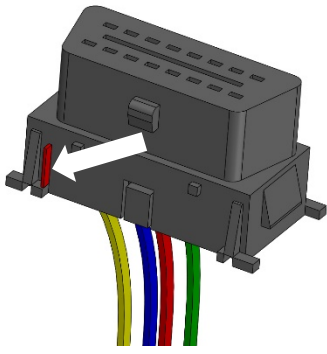
Scope of delivery :

- 1x OBD-Saver enclosure including the lock
- 2x keys
- 1x allen wrench 2,5 / 3
- 1x mounting bracket / 2x fillister head screw M5
- 3x allen wrench M3 + 1x spare screw
- 2x window sticker

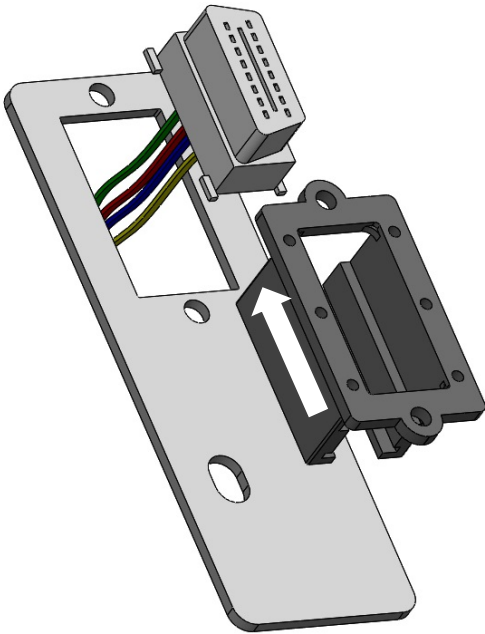
Mounting :



- remove the original OBD socket jack from its housing

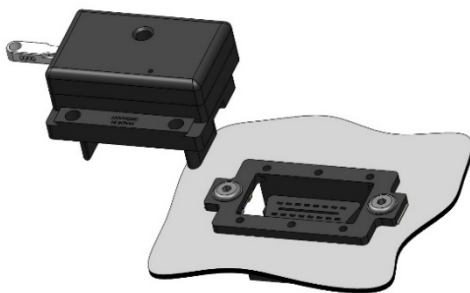


- remove the plastic lug marked red (e.g. with a sharp knife)

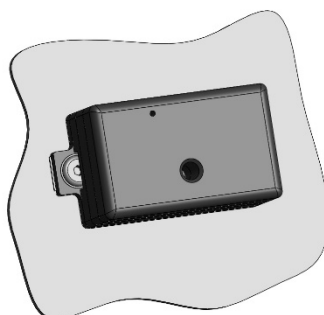


- remove screw from original OBD bracket
- mount bracket on plastic tab and fix it with the previously removed screw (magnetic screwdriver required)
- push the socket jack into the OBD-Saver housing. (The socket jack – barbs have to be fully pressed into the housing!)
- mount both (housing and socket jack) onto the mounting bracket with the provided fillister screws

→ see pictures on the following pages



- Plug in the lock and fix it with the provided M3 screws
- Close the OBD-Saver and remove the key

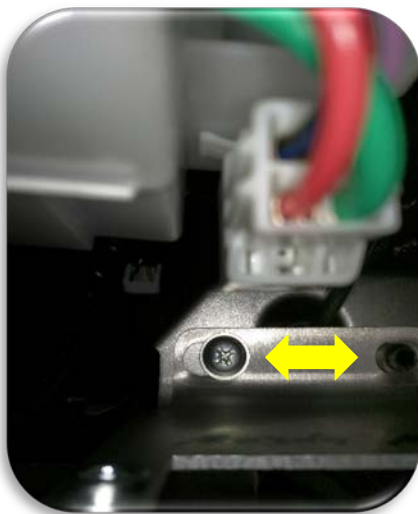




Remove screw



Position bracket



mount bracket on plastic tab an fix it
with the previously removed screw
(magnetic screwdriver required)



push the socket jack into the OBD-Saver housing



mount both (housing and socket jack) onto the mounting bracket with the provided fillister screws



plug in the lock and fix it with the provided M3 screws



close the OBD-Saver and remove the key